



UNIVERSITY OF CALIFORNIA PRESS
JOURNALS + DIGITAL PUBLISHING

2012

**ADVERTISING RATES
& LIST RENTAL
INFORMATION**

ADVERTISING VENUES AVAILABLE:

- Print Ads
- Banner Ads
- e-Newsletters
- Inserts
- List Rentals

AD SPECS

Submit ads as 300 dpi print-optimized PDF/X-1a files with fonts and images embedded. All ads black and white non-bleed unless otherwise noted. Black and white ads should be set as grayscale. The dimensions of the file must match the reserved ad space. Please submit ads to Jennifer Rogers at jrogers@ucpress.edu.

TERMS

All ads subject to publisher's approval. Each insertion order should clearly address ad space being reserved and billing information. Cancellations made after the published reservation date will be subject to a 100% cancellation fee.

PAYMENT

Prepayment is required of first-time advertisers. 30 days from invoice/tearsheet notice for continuing advertisers. Checks, Visa, MasterCard, and Wire Transfer accepted.

DISCOUNTS

15% to agencies; 10% to publishers whose books are reviewed; 25% on mailing list rental price in combination with a print ad in the same journal; 10% for two issue contract; 10% for two or more pages, same issue; 15% for four+ issue contract.

CONTACT:

Jennifer Rogers
Advertising Sales Representative
University of California Press Journals + Digital Publishing
2000 Center Street, Suite 303
Berkeley, CA 94704-1223
E-mail: jrogers@ucpress.edu
Ph: (510) 642-6188
Fax: (510) 642-9917

UNIVERSITY OF CALIFORNIA PRESS JOURNALS + DIGITAL PUBLISHING

Founded in 1893, University of California Press, Journals and Digital Publishing Division disseminates scholarship of enduring value. One of the largest, most distinguished, and innovative of the university presses today, its collection of print and online journals spans topics in the social sciences, humanities, and sciences with concentrations in sociology, musicology, history, religion, cultural and area studies, biological sciences, law, and literature. In addition to publishing its own journals, the division also provides traditional and digital publishing services to many client scholarly societies and associations.



BOOM: A JOURNAL OF CALIFORNIA

NEW!

The first and only scholarly journal to explore the Golden State in its totality—its history, culture, society, industry, politics, and arts and how they both influence and are influenced by the wider world—*Boom* is devoted to advancing our intellectual understanding of California. The journal includes a wide range of works, from scholarly articles forming the gravitational center of each issue, to shorter, often informal works.

DETAILS //

96 pages / issue

March, June,
September, December

2,200 total circulation*

*includes bookstore sales

RATES

| | | |
|-----------------------------|---------------------------------------|--------|
| Full page w/border: | 6 3/4" x 9" | \$ 660 |
| 1/2 page Horiz: | 6 3/4" x 4 3/8" | \$ 465 |
| 1/2 page Vert: | 3 1/4" x 9" | \$ 465 |
| 1/4 page: | 3 1/4" x 4 3/8" | \$ 230 |
| 4-Color, add per insertion: | \$500 full page, \$250 1/2, \$125 1/4 | |

Covers, 4 color bleed, trim size 8 1/2 x 11

Cover 2: 8 3/4" x 11 1/4" \$ 1300

Cover 3: 8 3/4" x 11 1/4" \$ 1300

Cover 4: 8 3/4" x 11 1/4" \$ 1400

ISSUE

March

June

September

December

RESERVATIONS

January 10

April 10

July 10

October 10

ARTWORK

January 15

April 15

July 15

October 15

ASIAN SURVEY

Asian Survey provides penetrating analysis and commentary on the politics, economics, social issues, and foreign relations of countries from Afghanistan to the Pacific Rim. Since 1961, this scholarly yet accessible journal has offered empirically grounded insider perspectives on important current events, making it one of the most widely read and quoted sources on developments in the region.

DETAILS //

200 pages / issue

February, April,
June, August,
October, December

1,100 total circulation

RATES

| | | |
|------------|-----------------|-------|
| Full page: | 4 1/2" x 7 1/2" | \$385 |
| 1/2 page: | 4 1/2" x 3 3/4" | \$300 |
| Cover 3: | 4 1/2" x 7 1/2" | \$450 |

ISSUE

February
April
June
August
October
December

RESERVATIONS

December 15
February 15
April 15
June 15
August 15
October 15

ARTWORK

January 1
March 1
May 1
July 1
September 1
November 1

JOURNAL OF PALESTINE STUDIES

The *Journal of Palestine Studies*, the only North American journal devoted exclusively to Palestinian affairs and the Arab-Israeli conflict, brings you timely and comprehensive information on the region's political, religious, and cultural concerns. With emphasis on peaceful conflict resolution, the journal unites sound research and analysis with a variety of well-informed perspectives by academics, policy makers, and diplomats.

DETAILS //

208 pages / issue

February, May,
August, November

1,500 total circulation

RATES

| | | |
|------------|-------------|-------|
| Full page: | 5 1/2" x 8" | \$385 |
| 1/2 page: | 5 1/2" x 4" | \$300 |
| Cover 3: | 5 1/2" x 8" | \$450 |
| Cover 4: | 5 1/2" x 8" | \$550 |

ISSUE

February
May
August
November

RESERVATIONS

December 15
March 15
June 15
September 15

ARTWORK

January 1
April 1
July 1
October 1

JOURNAL OF VIETNAMESE STUDIES

Journal of Vietnamese Studies is the only English-language journal devoted exclusively to the study of Vietnamese history, politics, culture and society, as well as Vietnam-related topics that have traditionally been set apart from mainstream area studies scholarship such as the Vietnamese diaspora and the Vietnam War.

DETAILS //

256 pages / issue

February, May,
August, November

250 total circulation

RATES

| | | |
|------------|-----------------|-------|
| Full page: | 4 1/2" x 7 1/2" | \$385 |
| 1/2 page: | 4 1/2" x 3 3/4" | \$300 |
| Cover 3: | 4 1/2" x 7 1/2" | \$450 |

ISSUE

February
May
August
November

RESERVATIONS

December 15
March 15
June 15
September 15

ARTWORK

January 1
April 1
July 1
October 1

MEXICAN STUDIES/ESTUDIOS MEXICANOS

Multidisciplinary by design and international by nature, *Mexican Studies/Estudios Mexicanos* is the only U.S.-published academic journal exclusively devoted to the study of Mexico and its peoples, as well as Mexican Americans. Insightful articles in both English and Spanish examine cultural, historical, political, social, economic, and scientific factors affecting the country's development.

DETAILS //

208 pages / issue

February, August

700 total circulation

RATES

| | | |
|------------|-----------------|-------|
| Full page: | 4 1/2" x 7 1/2" | \$385 |
| 1/2 page: | 4 1/2" x 3 3/4" | \$300 |
| Cover 3: | 4 1/2" x 7 1/2" | \$450 |

ISSUE

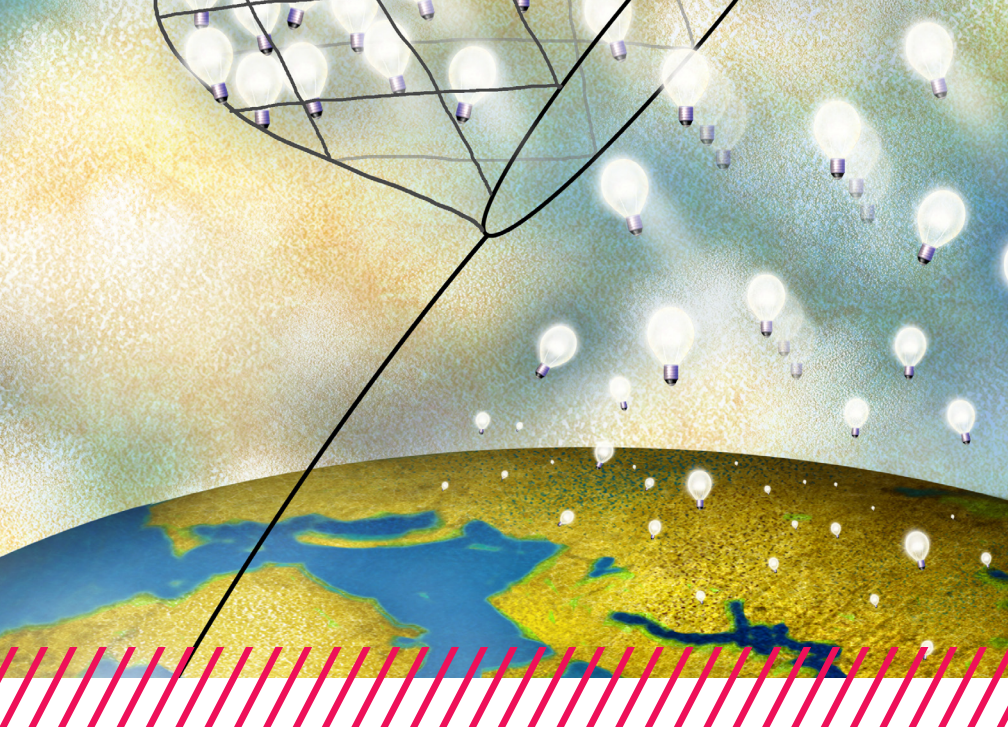
February
August

RESERVATIONS

December 15
June 15

ARTWORK

January 1
July 1



CALIFORNIA MANAGEMENT REVIEW

For over 50 years *California Management Review* has served as an important vehicle of communication between those who study management and those who practice it. With articles that are both research-based and relevant to today's managers, *CMR* has established itself as a highly ranked and respected publication. Editorial emphasis is on three areas of critical importance to both practicing managers and academic researchers: strategy and organization, global competition and competitiveness, and business and public policy.

DETAILS //

160 pages / issue
 February, May, August,
 November
 2,500 total circulation

RATES

| | | |
|--------------------|-------------|-------|
| Full page: | 6" x 9 " | \$400 |
| Half page (horiz): | 6" x 4 1/4" | \$310 |
| Cover 2: | 6" x 9 " | \$500 |
| Cover 3: | 6" x 9 " | \$500 |

ISSUE

February
 May
 August
 November

RESERVATIONS

December 1
 March 1
 June 1
 September 1

ARTWORK

December 15
 March 15
 June 15
 September 15

CLASSICAL ANTIQUITY

Classical Antiquity explores interdisciplinary research and discussion of major issues throughout the field of classics, including Greek and Roman literature, history, archaeology, art, philosophy and philology—from the Bronze Age through Late Antiquity.

DETAILS //

176 pages / issue

April, October

450 total circulation

RATES

Full page: 5 1/2" x 8" \$385

1/2 page: 5 1/2" x 4" \$300

Cover 3: 5 1/2" x 8" \$450

ISSUE

April

October

RESERVATIONS

February 15

August 15

ARTWORK

March 1

September 1

JOURNAL OF EMPIRICAL RESEARCH ON HUMAN RESEARCH ETHICS

Connecting institutions and researchers concerned about the responsible conduct of research, the *Journal of Empirical Research on Human Research Ethics* showcases the most important empirical literature on human research ethics. By disseminating information that fosters the intelligent application of ethical principles in research contexts worldwide, *JERHRE* endorses respect and protection of human subjects and methodology to produce valid and ethical research.

DETAILS //

100 pages / issue

February, April, July,
October, December

300 total circulation

RATES

Full page: 7 1/2" x 10" \$385

1/2 page horiz: 7 1/2" x 4 1/2" \$300

1/2 page vert: 3 1/4" x 10" \$300

ISSUE

February

April

July

October

December

RESERVATIONS

January 1

March 1

June 1

September 1

November 1

ARTWORK

January 15

March 15

June 15

September 15

November 15



FILM QUARTERLY

International in coverage and reputation, *Film Quarterly* is one of the most respected, widely-read publications on film studies. Since its debut in 1958, the journal has been one of the leading voices in film, television, and video criticism. *FQ* offers in-depth articles, interviews with innovative filmmakers, engaging discussions of contemporary film theory, reviews of documentaries and independent/avant-garde film and video, and unrivalled reviews of new film books.

DETAILS //

96 pages/issue

March, June,
September, December

1,700 total circulation

RATES

Full page: 7 1/4" x 9 1/2"

1/2 page horiz: 7 1/4" x 4 5/8"

1/2 page vert: 3 1/2" x 9 1/2"

1/4 page: 3 1/2" x 4 5/8"

Cover 2: 7 1/4" x 9 1/2"

Cover 3: 7 1/4" x 9 1/2"

Cover 4: 7 1/4" x 9 1/2"

FOR- PROFIT

\$660

\$465

\$465

\$230

\$725

\$725

\$800

NON- PROFIT

\$595

\$420

\$420

\$205

\$650

\$650

\$720

4-Color add \$500 per insertion. Color available on covers only.

ISSUE

March

June

September

December

RESERVATIONS

January 15

April 15

July 15

October 15

ARTWORK

February 1

May 1

August 1

November 1



GASTRONOMICA

The Journal of Food and Culture

Gastronomica renews the connection between sensual and intellectual nourishment by offering readers a taste of passionate inquiry through scholarship, humor, fiction, poetry, and exciting visual imagery. With its diverse voices and eclectic mix of articles, *Gastronomica* uses food as an important source of knowledge about different cultures and societies, provoking discussion and encouraging thoughtful reflection on the history, literature, representation, and cultural impact of food.

DETAILS //

128 pages / issue
 February, May,
 August, November
 8,850 total circulation

RATES

| | | | |
|--|------------------|----------|----------|
| Black & White | | | |
| Full page: | 6 3/4" x 9 1/4" | \$ 1025 | \$ 925 |
| 1/2 page horiz: | 6 3/4" x 4 1/2" | \$ 715 | \$ 645 |
| 1/2 page vert: | 3 1/4" x 9 1/4" | \$ 715 | \$ 645 |
| 1/4 page: | 3 1/4" x 4 1/2" | \$ 360 | \$ 325 |
| 4-Color add per insertion: \$500 full page, \$250 1/2, \$125 1/4 | | | |
| Covers, 4 color bleed, trim size 8 1/2 x 11 | | | |
| Cover 2: | 8 3/4" x 11 1/4" | \$ 2,025 | \$ 1,825 |
| Cover 3: | 8 3/4" x 11 1/4" | \$ 2,025 | \$ 1,825 |
| Cover 4: | 8 3/4" x 11 1/4" | \$ 2,225 | \$ 2,000 |

ISSUE

February
 May
 August
 November

RESERVATIONS

December 10
 March 15
 June 15
 September 15

ARTWORK

January 5
 April 5
 July 5
 October 5

HISTORICAL STUDIES IN THE NATURAL SCIENCES

Historical Studies in the Natural Sciences (HSNS) charts the intellectual and social history of the physical sciences and experimental biology since the 17th century. Widely regarded as the leading journal in the historiography of science and technology, *HSNS* increased to quarterly publication in 2008 to expand its roster of pioneering articles and notable reviews by the most influential writers in their field.

DETAILS //

124 pages / issue

February, April, June,
September, November

400 total circulation

RATES

| | | |
|------------|-----------------|-------|
| Full page: | 4 1/2" x 7 1/2" | \$385 |
| 1/2 page: | 4 1/2" x 3 3/4" | \$300 |
| Cover 3: | 4 1/2" x 7 1/2" | \$450 |

ISSUE

February
April
June
September
November

RESERVATIONS

December 15
February 15
April 15
July 15
September 15

ARTWORK

January 1
March 1
May 1
August 1
October 1

HUNTINGTON LIBRARY QUARTERLY

Established in 1937, the *Huntington Library Quarterly* publishes scholarly articles on the literature, history, and art of the sixteenth to eighteenth centuries in Britain and America, with special emphasis on textual and bibliographical studies, the relationship of literature, politics, and religion, and performance history of drama and music. The journal also publishes book reviews and articles on important work in early modern studies.

DETAILS //

160 pages / issue

March, June,
September, December

375 total circulation

RATES

| | | |
|------------|-------------|-------|
| Full page: | 5 1/2" x 8" | \$385 |
| 1/2 page: | 5 1/2" x 4" | \$300 |
| Cover 3: | 5 1/2" x 8" | \$450 |

ISSUE

March
June
September
December

RESERVATIONS

January 15
April 15
July 15
October 15

ARTWORK

February 1
May 1
August 1
November 1

JOURNAL OF THE SOCIETY OF ARCHITECTURAL HISTORIANS

Established in 1941 and printed quarterly since 1950, *Journal of the Society of Architectural Historians* is a leading English-language journal on the built environment. Each issue offers three to four scholarly articles on American and international topics, reviews of recently published books, reviews of architecture exhibitions, and a variety of editorials designed to place the discipline of architectural history within a larger intellectual context.

DETAILS //

148 pages/issue

March, June, September,
December

3,500 total circulation

RATES

| | | |
|-----------------|-----------------|--------|
| Full page: | 7 1/2" x 10" | \$ 680 |
| 1/2 page horiz: | 7 1/2" x 4 1/2" | \$ 475 |
| 1/4 page vert: | 3 1/4" x 4 1/2" | \$ 265 |
| Cover 3: | 7 1/2" x 10" | \$ 780 |

ISSUE

March
June
September
December

RESERVATIONS

January 1
April 1
July 1
October 1

ARTWORK

January 15
April 15
July 15
October 15

PACIFIC HISTORICAL REVIEW

Since 1932, the *Pacific Historical Review* has accurately and adeptly covered the history of American expansion to the Pacific and beyond, as well as the post-frontier developments of the 20th-century American West. Published for the Pacific Coast Branch of the American Historical Association, the journal features a wealth of in-depth articles, historiographical and review essays, book reviews, and professional news.

DETAILS //

174 pages/issue

February, May,
August, November

700 total circulation

RATES

| | | |
|------------|-----------------|--------|
| Full page: | 4 1/2" x 7 1/2" | \$ 385 |
| 1/2 page: | 4 1/2" x 3 3/4" | \$ 300 |

ISSUE

February
May
August
November

RESERVATIONS

December 15
March 15
June 15
September 15

ARTWORK

January 1
April 1
July 1
October 1

SOUTHERN CALIFORNIA QUARTERLY

This quarterly magazine published by the Historical Society of Southern California has a long and distinguished history. In 1935 *Southern California Quarterly* established itself as a respected historical resource and today continues its commitment to scholarship, public awareness and appreciation of local history in a lively and colorful new format. *Southern California Quarterly* is a peer-reviewed scholarly journal devoted to the publication of articles and edited documents relating to the history of Southern California, California as a whole, and the West.

DETAILS //

136 pages / issue

February, May,
August, November

575 total circulation

RATES

| | | |
|------------|-------------|-------|
| Full page: | 5 1/2" x 8" | \$385 |
| 1/2 page: | 5 1/2" x 4" | \$300 |

ISSUE

February
May
August
November

RESERVATIONS

December 1
March 1
June 1
September 1

ARTWORK

December 15
March 15
June 15
September 15

THE PUBLIC HISTORIAN

The Public Historian is the definitive voice of the public history profession, providing historians with the latest scholarship and applications from the field. Besides stimulating articles that demonstrate the breadth of public history, each issue also includes book reviews, museum and exhibit reviews, and film and electronic media reviews.

DETAILS //

144 pages / issue

February, May,
August, November

1,600 total circulation

RATES

| | | |
|------------|-----------------|-------|
| Full page: | 4 1/2" x 7 1/2" | \$385 |
| 1/2 page: | 4 1/2" x 3 3/4" | \$300 |

ISSUE

February
May
August
November

RESERVATIONS

December 15
March 15
June 15
September 15

ARTWORK

January 1
April 1
July 1
October 1

JUNG JOURNAL

Culture & Psyche

Jung Journal: Culture & Psyche is an international quarterly published by the C.G. Jung Institute of San Francisco, one of the oldest institutions dedicated to Jungian studies and analytic training. The journal was founded in 1979 by John Beebe under the title, *The San Francisco Jung Institute Library Journal*. In 2007 the title was changed to reflect its evolution from a local journal of book and film reviews to one that attracts readers and contributors from the academy and the arts, in addition to Jungian analyst-scholars.

DETAILS //

112 pages / issue

February, May,
August, November

750 total circulation

RATES

Full page: 4 1/2" x 7 1/2" \$385

1/2 page horiz: 4 1/2" x 3 3/4" \$300

ISSUE

February

May

August

November

RESERVATIONS

December 1

March 1

June 1

September 1

ARTWORK

December 15

March 15

June 15

September 15

NEW CRIMINAL LAW REVIEW

New Criminal Law Review provides timely, fresh commentary and in-depth scholarly analyses on a wide range of criminal law topics, with a primary focus on examinations of crime and punishment in domestic, transnational, and international contexts.

DETAILS //

160 pages / issue

January, April,
July, October

250 total circulation

RATES

Full page: 4 1/2" x 7 1/2" \$385

1/2 page: 4 1/2" x 3 3/4" \$300

Cover 3: 4 1/2" x 7 1/2" \$450

ISSUE

January

April

July

October

RESERVATIONS

November 15

February 15

May 15

August 15

ARTWORK

December 1

March 1

June 1

September 1

LAW AND LITERATURE

Edited by faculty of the Cardozo School of Law and a board of international scholars, *Law and Literature* is one of only two journals in the country devoted solely to the interdisciplinary movement known as Law and Literature. The movement, which investigates law-related literature and the literary value of legal documents, provides a unique perspective on how law and literature reflect and illuminate each other.

DETAILS //

178 pages / issue

March, July,
November

250 total circulation

RATES

| | | |
|------------|-----------------|-------|
| Full page: | 4 1/2" x 7 1/2" | \$385 |
| 1/2 page: | 4 1/2" x 3 3/4" | \$300 |
| Cover 3: | 4 1/2" x 7 1/2" | \$450 |

ISSUE

March
July
November

RESERVATIONS

January 15
May 15
September 15

ARTWORK

February 1
June 1
October 1

NINETEENTH-CENTURY LITERATURE

The preeminent journal in its field, *Nineteenth-Century Literature* has earned a reputation over its fifty-year history for innovative scholarship, scrupulous editing, and distinguished book reviews. *NCL* features articles that span across disciplines and explore themes in gender, history, military studies, psychology, and cultural studies. Bringing together an eclectic group of transatlantic authors and poets, literary characters, and discourses, this distinguished journal is the premier resource for new research and thought on all English-language writers of the nineteenth century.

DETAILS //

144 pages / issue

March, June,
September, December

1,000 total circulation

RATES

| | | |
|------------|-----------------|-------|
| Full page: | 4 1/2" x 7 1/2" | \$385 |
| 1/2 page: | 4 1/2" x 3 3/4" | \$300 |
| Cover 3: | 4 1/2" x 7 1/2" | \$450 |

ISSUE

March
June
September
December

RESERVATIONS

January 15
April 15
July 15
October 15

ARTWORK

February 1
May 1
August 1
November 1

REPRESENTATIONS

Representations publishes trend-setting articles and criticism in a wide variety of fields within the humanities. Through articles, special issues, and forums, contributors provide the scholarly world with singular approaches to interdisciplinary study and clarify and identify the many discursive components of our cultural framework.

DETAILS //

152 pages / issue

February, May,
August, November

675 total circulation

RATES

| | | |
|------------|-------------|-------|
| Full page: | 5 1/2" x 8" | \$385 |
| 1/2 page: | 5 1/2" x 4" | \$300 |
| Cover 3: | 5 1/2" x 8" | \$450 |

ISSUE

February
May
August
November

RESERVATIONS

December 15
March 15
June 15
September 15

ARTWORK

January 1
April 1
July 1
October 1

RHETORICA

Truly international in scope, *Rhetorica* publishes articles in English, French, German, Italian, and Spanish on any subject relevant to the history of rhetoric. Articles range from studies of rhetorical theory to interdisciplinary explorations of the relationship of rhetoric to poetics, philosophy, politics, religion, and law.

DETAILS //

112 pages / issue

February, May,
August, November

650 total circulation

RATES

| | | |
|------------|-----------------|-------|
| Full page: | 4 1/2" x 7 1/2" | \$350 |
| 1/2 page: | 4 1/2" x 3 3/4" | \$270 |

Mailing list not available.

ISSUE

February
May
August
November

RESERVATIONS

December 15
March 15
June 15
September 15

ARTWORK

January 1
April 1
July 1
October 1

American Musicological Society



VOLUME 61 • NUMBER

JOURNAL OF THE AMERICAN MUSICOLOGICAL SOCIETY

The premier journal in the field, the *Journal of the American Musicological Society* publishes scholarship from all fields of musical inquiry: historical musicology, critical theory, music analysis, iconography and organology, performance practice, aesthetics and hermeneutics, ethnomusicology, gender and sexuality, and popular music and cultural studies. Founded in 1948, *JAMS* is recognized for the breadth of its intellectual scope and the high caliber of its articles, book reviews, and commentary.

DETAILS //

184 pages / issue

April, August,
December

4,250 total circulation

RATES

| | | |
|-----------------|-----------------|--------|
| Full page: | 4 1/2" x 7 1/2" | \$ 475 |
| 1/2 page horiz: | 4 1/2" x 3 3/4" | \$ 360 |
| Cover 4: | 4 1/2" x 7 1/2" | \$ 600 |

ISSUE

April
August
December

RESERVATIONS

February 15
June 15
October 15

ARTWORK

March 1
July 1
November 1

19TH-CENTURY MUSIC

19th-Century Music provides a lively platform for both innovative and traditional scholarship concerning music composed between 1780 and 1920. The journal embraces a broad spectrum of issues including aesthetics, hermeneutics, theory and analysis, performance practice, gender and sexuality, reception history, and historiography.

DETAILS //

96 pages/issue

March, July,
November

800 total circulation

RATES

| | | |
|------------|-------------|-------|
| Full page: | 7" x 8 1/2" | \$385 |
| 1/2 page: | 7" x 4 1/8" | \$300 |
| Cover 2: | 7" x 8 1/2" | \$410 |
| Cover 3: | 7" x 8 1/2" | \$410 |
| Cover 4: | 7" x 8 1/2" | \$450 |

ISSUE

March
July
November

RESERVATIONS

January 15
May 15
September 15

ARTWORK

February 1
June 1
October 1

MUSIC PERCEPTION

Fostering communications between scientists and musicians interested in the study of music phenomena, *Music Perception* publishes original theoretical and empirical papers, methodological articles, and critical reviews concerning the study of music.

DETAILS //

92 pages/issue

February, April,
June, September,
December

650 total circulation

RATES

| | | |
|------------|-----------------|-------|
| Full page: | 6 3/4" x 9" | \$385 |
| 1/2 page: | 6 3/4" x 4 3/8" | \$300 |

ISSUE

February
April
June
September
December

RESERVATIONS

December 15
February 15
April 15
July 15
October 15

ARTWORK

January 1
March 1
May 1
August 1
November 1

MUSIC THEORY SPECTRUM

Music Theory Spectrum features the best work in music theory and analysis, including aesthetics, history of theory, post-tonal theory, critical theory, linear analysis, rhythm, and music cognition. Recognized as one of the foremost journals in the field, it is the official publication of the Society for Music Theory.

DETAILS //

100 pages / issue
April, October
1,500 total circulation

RATES

| | | |
|------------|-----------------|--------|
| Full page: | 6 3/4" x 9" | \$ 405 |
| 1/2 page: | 6 3/4" x 4 3/8" | \$ 325 |

ISSUE

April
October

RESERVATIONS

February 15
August 15

ARTWORK

March 1
September 1

THE JOURNAL OF MUSICOLOGY

For two decades, *The Journal of Musicology* has fostered creative and innovative thinking on musicology in all its forms. An eclectic blend of traditional research and wide-ranging coverage of the new and sometimes controversial turns of musicological thought, *JM* offers articles on every period, field, and methodology of musicological scholarship. This comprehensive coverage, along with its solid academic rigor, has made *JM* one of the foremost publications in its field.

DETAILS //

112 pages / issue
January, April,
July, October
700 total circulation

RATES

| | | |
|------------|-----------------|--------|
| Full page: | 4 1/2" x 7 1/2" | \$ 385 |
| 1/2 page: | 4 1/2" x 3 3/4" | \$ 300 |
| Cover 3: | 4 1/2" x 7 1/2" | \$ 450 |

ISSUE

January
April
July
October

RESERVATIONS

November 15
February 15
May 15
August 15

ARTWORK

December 1
March 1
June 1
September 1

Bio

BIOSCIENCE®

Since 1964, *BioScience* has presented readers with timely and authoritative overviews of current research in biology, accompanied by essays and discussion sections on education, public policy, history, and the conceptual underpinnings of the biological sciences. A peer-reviewed, heavily cited journal—reflected in its impact factor of 5.510 and rank of 7/85 in Biology, according to the 2010 *Journal Citation Report*—*BioScience* is the official journal of the American Institute of Biological Sciences.

| DETAILS // | RATES | 1X | 3X | 6X | 12X |
|-------------------------|---------------------------------|-------|-------|-------|-------|
| 96 pages/issue | Full page: 7" x 10" | \$660 | \$610 | \$560 | \$510 |
| Monthly | ½ page horiz: 7" x 4 ¼" | \$465 | \$425 | \$390 | \$355 |
| | ¼ page: 3" x 4 ¼" | \$230 | \$210 | \$190 | \$170 |
| 2,000 total circulation | 4-Color add \$500 per insertion | | | | |
| | 2-Color add \$250 per insertion | | | | |
| | Back Cover add \$600 | | | | |

Display ads must be reserved no later than the **1st two months prior** and artwork is due no later than the 8th (for example, to place a display ad in the **December** issue you must reserve it by **October 1** and we must have the artwork by **October 8**).

WEB BANNER ADVERTISING

Reach out to over 100,000 combined unique visitors per month, including educators and biological science professionals, at actionbioscience.org and AIBS.org.

THE AUK

One of the foremost journals in ornithology and the official publication of the American Ornithologists' Union, *The Auk* publishes original reports on the biology of birds. For over 100 years, *The Auk* has spanned innovative empirical and theoretical findings—providing documentation, analysis, and interpretation of laboratory and field studies; theoretical or methodological developments; and reviews of new information and ideas.

DETAILS //

260 pages / issue

January, April,
July, October

2,600 total circulation

RATES

Full page: 7 ½" x 10" \$660
½ page horiz : 7 ½" x 4 ½" \$550

ISSUE

January
April
July
October

RESERVATIONS

November 15
February 15
May 15
August 15

ARTWORK

December 1
March 1
June 1
September 1

THE CONDOR

The Condor is the official publication of the Cooper Ornithological Society, a non-profit organization of over 2,000 professional and amateur ornithologists and one of the largest ornithological societies in the world. A quarterly international journal that publishes original research from all fields of avian biology, *The Condor* has been a highly respected forum in ornithology for more than 100 years.

DETAILS //

216 pages / issue

February, May,
August, November

1,300 total circulation

RATES

Full page: 7 ½" x 10" \$660
½ page horiz: 7 ½" x 4 ½" \$550

ISSUE

February
May
August
November

RESERVATIONS

December 15
March 15
June 15
September 15

ARTWORK

January 1
April 1
July 1
October 1

NOVA RELIGIO

Nova Religio presents scholarly interpretations and examinations of alternative, emergent, and new religious movements and communities in both past and present eras. Interdisciplinary and cross-cultural in scope, this vital journal contributes to a comprehensive consideration of an aspect of religion that is often misrepresented and misinterpreted in both public and scholarly forums.

DETAILS //

144 pages / issue

February, May,
August, November

300 total circulation

RATES

| | | |
|------------|-----------------|--------|
| Full page: | 4 1/2" x 7 1/2" | \$ 385 |
| 1/2 page: | 4 1/2" x 3 3/4" | \$ 300 |
| Cover 3: | 4 1/2" x 7 1/2" | \$ 450 |

ISSUE

February
May
August
November

RESERVATIONS

November 15
February 15
May 15
August 15

ARTWORK

December 1
March 1
June 1
September 1

RELIGION AND AMERICAN CULTURE

Religion and American Culture explores the interplay between religion and other spheres of American culture. The only journal devoted to promoting the ongoing scholarly discussion of the nature, terms, and dynamics of religion in America, it embraces an array of methodological approaches and theoretical perspectives, publishing articles that exemplify both innovative and more traditional aspects of American religious scholarship.

DETAILS //

130 pages / issue

January, July

500 total circulation

RATES

| | | |
|------------|-----------------|--------|
| Full page: | 4 1/2" x 7 1/2" | \$ 385 |
| 1/2 page: | 4 1/2" x 3 3/4" | \$ 300 |
| Cover 3: | 4 1/2" x 7 1/2" | \$ 450 |

ISSUE

January
July

RESERVATIONS

November 15
May 15

ARTWORK

December 1
June 1

SOCIAL PROBLEMS

One of the most respected and widely read journals in the social sciences, *Social Problems* presents accessible, relevant, and innovative articles with critical perspectives on contemporary social issues. Covering an extensive array of complex social concerns from race and gender through labor relations and civil rights, *SP* has been an important forum for sociological thought for over five decades.

DETAILS //

160 pages / issue

February, May,
August, November

1,800 total circulation

RATES

Full page: 5 1/2" x 8" \$385

1/2 page: 5 1/2" x 4" \$300

Institutional mailing list available only.

ISSUE

February

May

August

November

RESERVATIONS

December 1

March 1

June 1

September 1

ARTWORK

December 15

March 15

June 15

September 15

SOCIOLOGICAL PERSPECTIVES

Established in 1957, *Sociological Perspectives* offers a wealth of pertinent articles within the field of sociology. Contributions by leading scholars address the ever-expanding body of knowledge about social processes related to economic, political, anthropological and historical issues.

DETAILS //

170 pages / issue

March, June,
September, December

1,500 total circulation

RATES

Full page: 5 1/2" x 8" \$385

1/2 page: 5 1/2" x 4" \$300

Institutional mailing list available only.

ISSUE

March

June

September

December

RESERVATIONS

January 15

April 15

July 15

October 15

ARTWORK

February 1

May 1

August 1

November 1